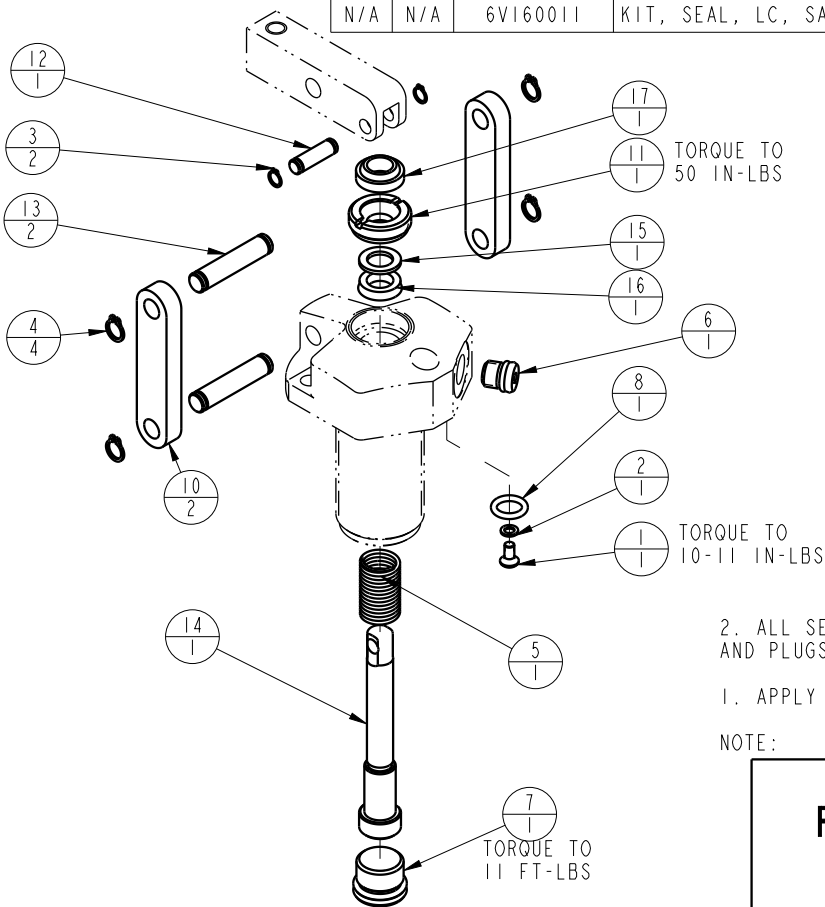


MODEL NO.			MODEL NAME			
16610400			ASSY, LC, SA, 350			
NO.	QTY	PART NO.	DESCRIPTION	STD SEAL KIT	FKM SEAL KIT	
1	1	21500019	SCREW, CAP, BTNH, M3 X 6, ALY			
2	1	21500200	WASHER			
3	2	23050020	RING, RTNG, EXT, 0.188	X	X	
4	4	23050021	RING, RTNG, EXT, 0.250	X	X	
5	1	23350048	SPRING, COMPRESSION			
6	1	30601122	PLUG, SOCH, SAE 2			
7	1	30670008	PLUG, SAE 6, FKM	X	X	
8	1	39050042	O-RING, (-011)	X	39051025	
9	1	67040065	TAG, LINK ASSY, LC			
10	2	81600021	LINK, LC, 450 lb			
11	1	81600036	RETAINER, LC, 450			
12	1	81600076	PIN, LC, SHORT, 450			
13	2	81600081	PIN, LC, LONG, 450			
14	1	81600112	PLUNGER, LC, SA, 350/1.5 KN			
15	1	39F54005	BU RING, (-109)	X	X	
16	1	39H52039	SEAL, BEVEL, 5/16 x 3/32 x 1/2	X	39V52031	
17	1	39V53025	WIPER, SNAP-IN, (5/16)	X	X	
N/A	N/A	60160011	KIT, SEAL, LC, SA, 350	NOTED		
N/A	N/A	6V160011	KIT, SEAL, LC, SA, 350, FKM			NOTED



2. ALL SEALS, BU RINGS, RETAINING RINGS, O-RINGS, AND PLUGS ARE INCLUDED IN THE SEAL KIT.

1. APPLY LUBRICANT TO ALL SEALS PRIOR TO ASSEMBLY.

NOTE:

PARTS LIST



VEKTEK, INC.
1334 E. SIXTH AVE. P.O. BOX 625
EMPORIA, KS. 66801 U.S.A.

ASSEMBLIES AFFECTED

PARTS LIST, LC, SA, 350

16610400

SIZE
A

PL1606

REV
C

C	5718	RELEASE	NPETERS	6/9/25
REV	IN ACCORDANCE WITH ECN	EFFECTIVE DATE	REVISED BY	DATE
DRW BY:	K. ROEMER	DRAWING STATUS: Released		
DATE:	06-23-06	PRODUCTION APPROVED FOR RELEASED STATUS ONLY		

FORM FEG035_PL_AS1ZE, REV. B

SHEET 1 OF 1